



3-BUTTON REMOTE CONTROL
MODELS: L993M, CH363, & CH363C


2-BUTTON KEYCHAIN REMOTE CONTROL
MODELS: L932M, CH382, & CH382C

Product Manual



Overview

Your remote control is compatible with all Chamberlain®, LiftMaster®, and Craftsman® garage door openers manufactured after 1997 with the exception of Craftsman Series 100. Your remote control can be programmed to operate up to three (L993M, CH363, & CH363C) or two (L932M, CH382, & CH382C) garage door openers. Each button on the remote control works independently of the other and must be programmed separately. The images throughout this manual are for reference only and your product may look different.

 **WARNING**

To prevent possible SERIOUS INJURY or DEATH from a moving gate or garage door:

- ALWAYS keep remote controls out of reach of children. NEVER permit children to operate, or play with the remote control transmitters
- Activate gate or door ONLY when it can be seen clearly, is properly adjusted and there are no obstructions to door travel.
- ALWAYS keep gate or garage door in sight until completely closed. NEVER permit anyone to cross path of moving gate or door.



WARNING: This product can expose you to chemicals including lead, which are known to the State of California to cause cancer or birth defects or other reproductive harm. For more information go to www.P65Warnings.ca.gov.

Tap the buttons below to navigate to a specific section of the manual.

Programming the Remote

Other important information:

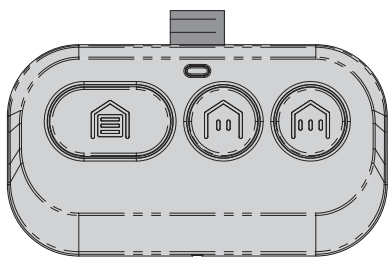
Replacing the Battery: 3-Button Remote Control

Replacing the Battery: 2-Button Keychain Remote Control

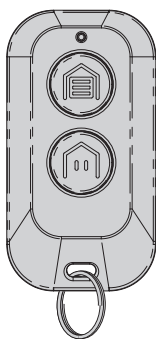
Replacement Parts

Additional Resources

Programming the Remote



3-Button Remote Control



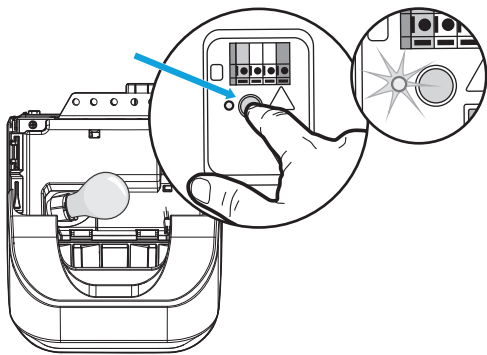
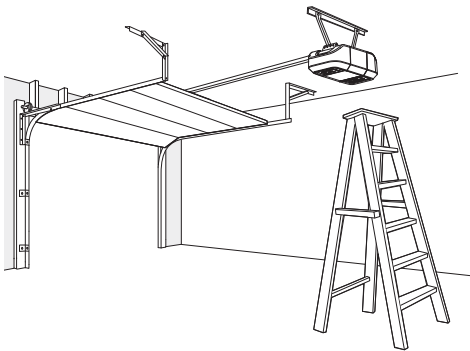
2-Button Keychain Remote Control

01 Prepare:

- **Read through the Instructions carefully.**
- Watch out for time sensitive instructions marked with an hourglass icon.
- Make sure the garage door is clear of ALL obstructions.
- Make sure the garage door opener has a working light. It will be needed for programming.

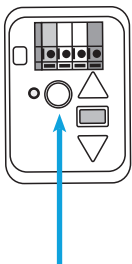


02 IMPORTANT: Your garage door opener has a LEARN button that is required to program your remote. Locate and identify the color of your garage door opener’s LEARN button (A ladder may be required and you may have to remove a light cover).



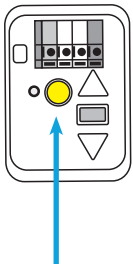
03 For remote programming instructions, tap the LEARN button color icon for your garage door opener below.

White



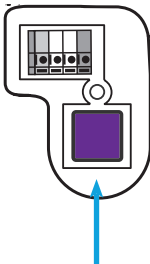
LEARN Button

Yellow



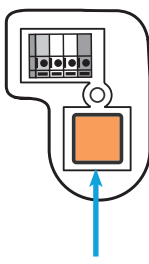
LEARN Button

Purple (Brown)



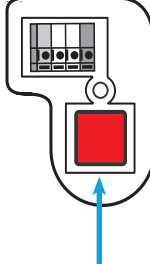
LEARN Button

Orange



LEARN Button

Red



LEARN Button

NOTE: The color of the purple LEARN button may fade with time and appear brown.

Options to Program Remote to Garage Door Opener with a Yellow LEARN Button

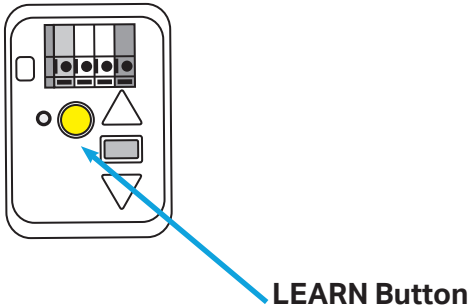


There are three ways to program your remote to a garage door opener with a yellow LEARN button. Tap your preferred method below.

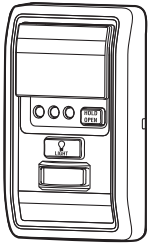
Option 1: To program your remote using the myQ app, **tap the myQ app icon.**



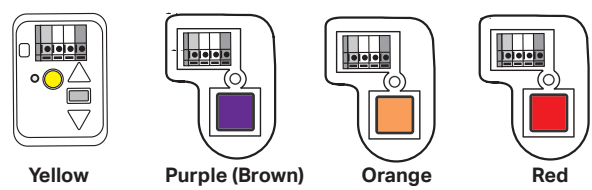
Option 2: To program your remote using garage door opener’s LEARN button, **tap the LEARN button icon.**



Option 3: To program your remote using garage door opener’s control panel, **tap the control panel icon.**

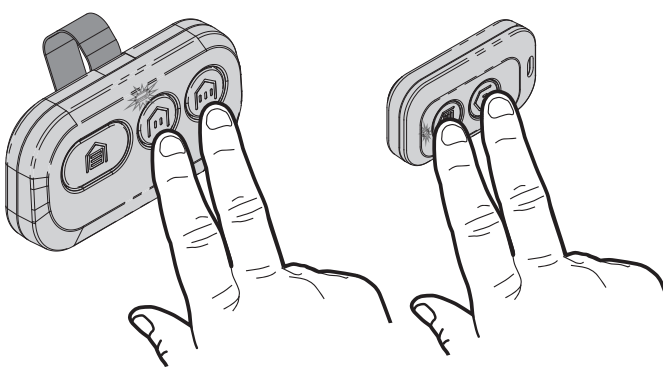


Program Remote to Garage Door Opener Using a Yellow, Purple, Orange, or Red LEARN Button

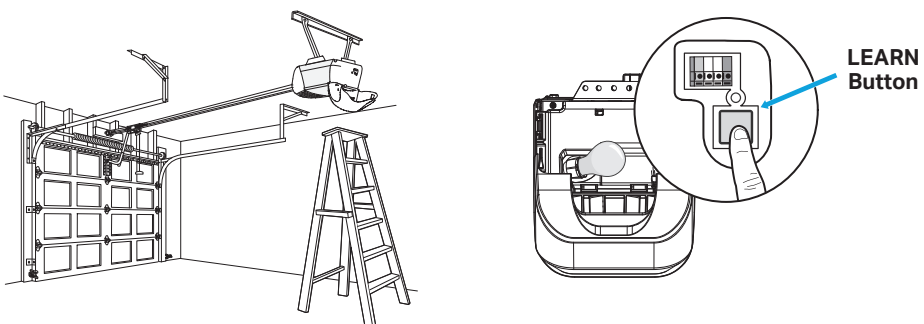


IMPORTANT: Read through all programming steps before you start.

01 Press and hold the two smaller buttons on the remote simultaneously until the red LED stays on (typically within 6 seconds).

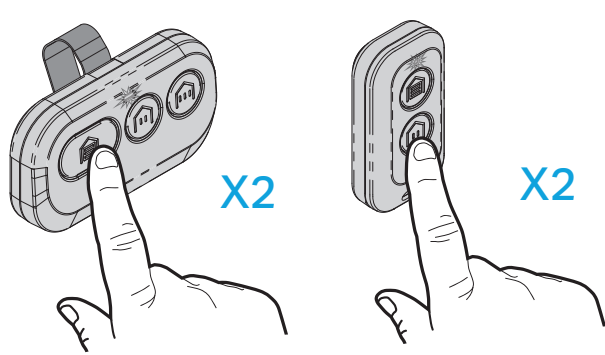


02 Press and **immediately** release the LEARN button.



20 Seconds

03 Within 20 seconds of pressing the LEARN button, press and release the remote button you would like to program **twice**. The red LED will flash intermittently.

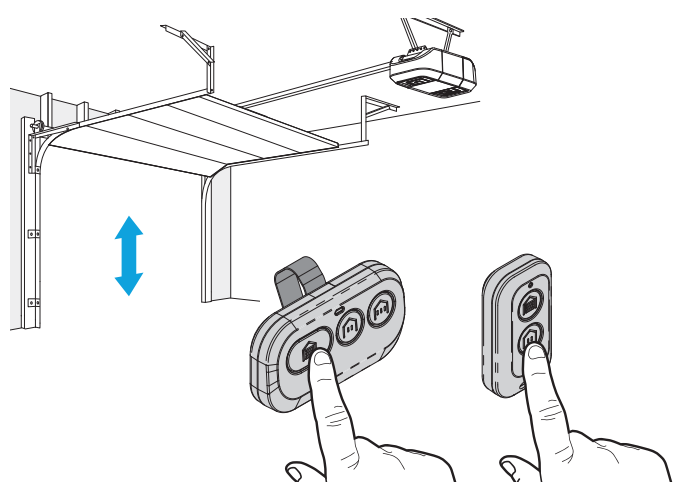


WARNING: Your garage door opener light will flash and your garage door will move.



3 Seconds

04 When your garage door moves, **within 3 seconds**, press and release any remote button.



To test your remote has programmed successfully [tap here](#).

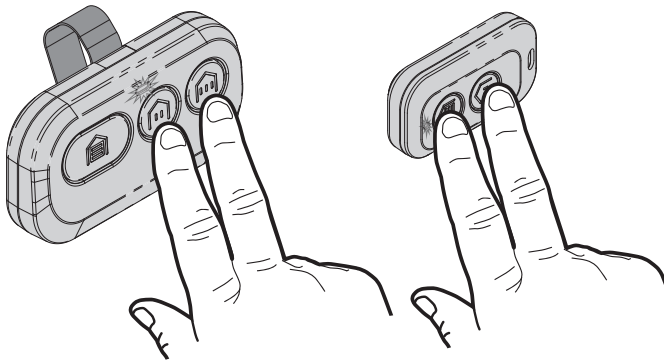
Program Remote to Garage Door Opener with a Yellow LEARN Button Using the Control Panel



IMPORTANT: Read through all programming steps before you start.

01

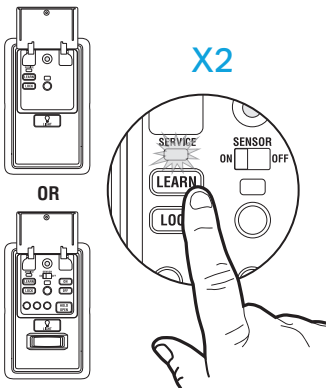
Press and hold the two smaller buttons on the remote simultaneously until the red LED stays on (typically 6 seconds).



02

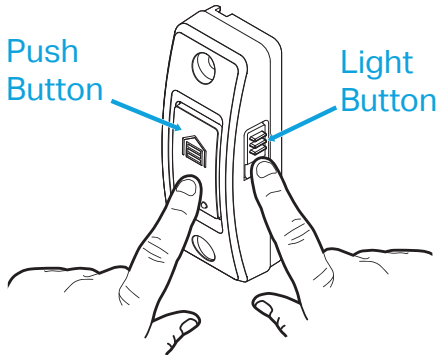
Follow the instructions below for your control panel model to set your garage door opener into programming mode.

Control Panel



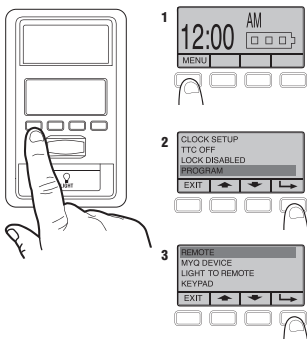
Lift the push bar. Press the LEARN button **twice**. The LED on the door control panel will pulse repeatedly.

Push Button Door Control



Press and hold the light button, then press and release the push button. The button LED will begin to flash.

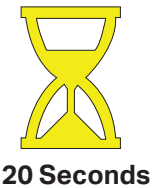
Smart Control Panel



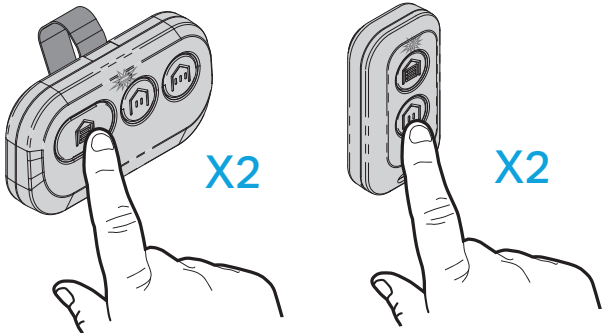
- 1. Select **MENU**.
- 2. Scroll down and select **PROGRAM**.
- 3. Scroll down and select **REMOTE**.

Do not follow on screen instructions.
MOVE DIRECTLY TO STEP 03.

03

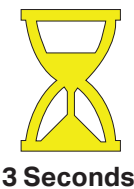


Within 20 seconds of pressing the LEARN button, press and release the remote button you would like to program **twice**. The red LED will flash intermittently.

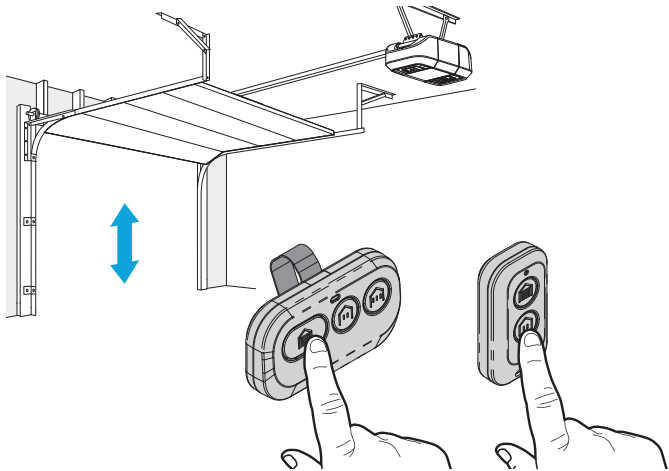


WARNING: Your garage door opener light will flash and your garage door will move.

04



When your garage door moves, **within 3 seconds**, press and release any remote button.



To test your remote has programmed successfully [tap here](#).

Options to Program Remote to Garage Door Opener with a White LEARN Button

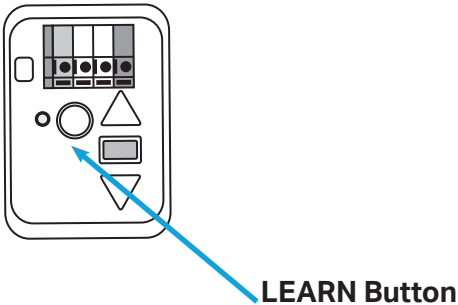


There are three ways to program your remote to a garage door opener with a white LEARN button. Tap your preferred method below.

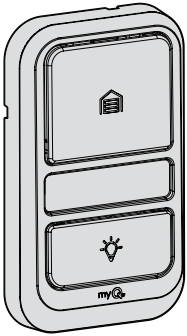
Option 1: To program your remote using the myQ app, **tap the myQ app icon.**



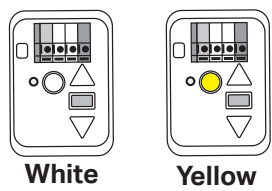
Option 2: To program your remote using garage door opener’s LEARN button, **tap the LEARN button icon.**



Option 3: To program your remote using garage door opener’s control panel, **tap the control panel icon.**

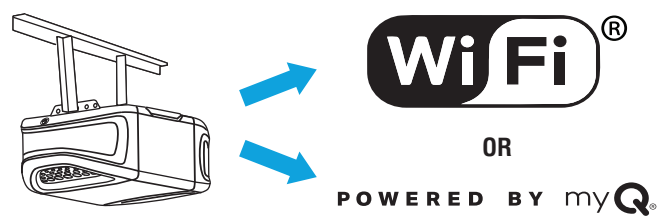


Program Remote to Garage Door Opener with a White or Yellow LEARN Button Using the myQ App



HIGHLY RECOMMENDED: Connect your garage door opener to the myQ app and program your remote to the garage door opener to unlock exciting features that include remote naming, notifications, and access history.

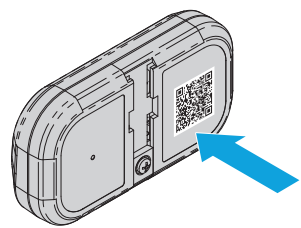
01 Look for a “Wi-Fi” or “Powered by myQ” logo to determine if your garage door opener is myQ compatible.



02 Tap or scan the QR code while using your smart device to download the myQ app. Follow the instructions in the app to connect to your garage door opener.

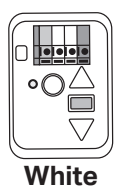


03 When your garage door opener is connected, scan the QR code on the reverse side of your remote, and follow the programming instructions in the myQ app.

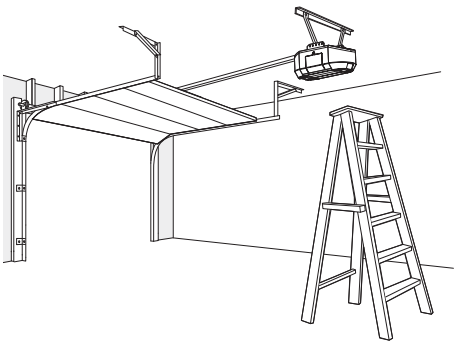


Once your remote is programmed in the myQ app, you can name your remote, view access history, and receive notifications when your remote activates the garage door opener.

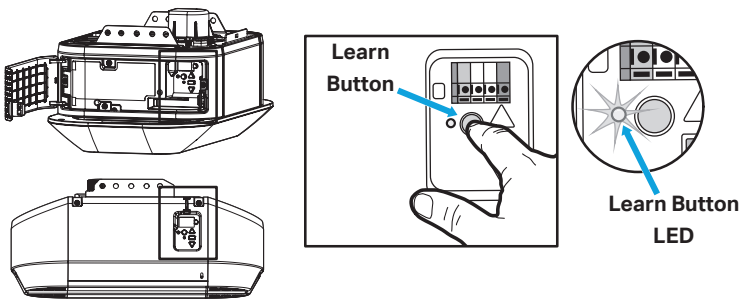
Program Remote to Garage Door Opener with a White LEARN Button Using the LEARN Button




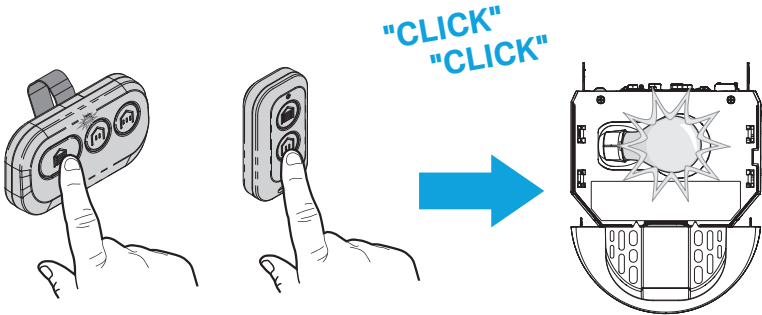
IMPORTANT: Read through all programming steps before you start.



01 Press and **immediately** release the LEARN button.

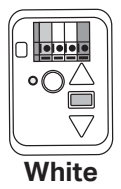


02  **30 Seconds**
Within 30 seconds, press and hold the remote button that you would like to program. Release the button when the garage door opener lights flash and/or two clicks are heard.



To test your remote has programmed successfully [tap here](#).

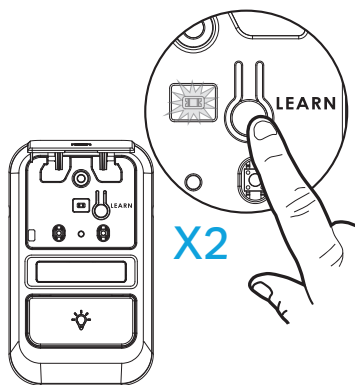
Program Remote to Garage Door Opener with a White LEARN Button Using the Control Panel



IMPORTANT: Read through all programming steps before you start

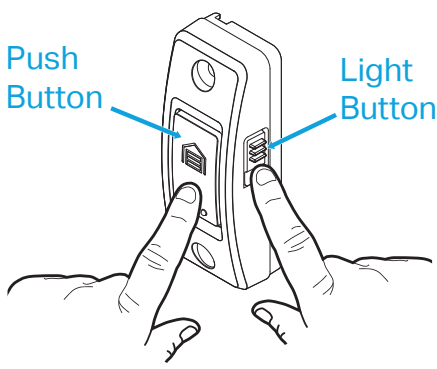
01 Follow the instructions below for your control panel model to set your garage door opener into programming mode.

Control Panel



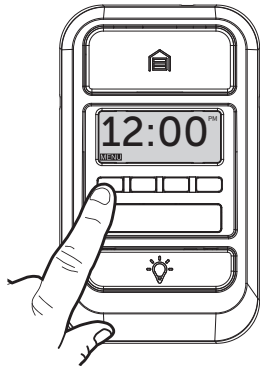
Lift the push bar. Press the LEARN button **twice**. The LED on the door control panel will pulse repeatedly.

Push Button Door Control



Press and hold the light button, then press and release the push button. The button LED will begin to flash.

Smart Control Panel

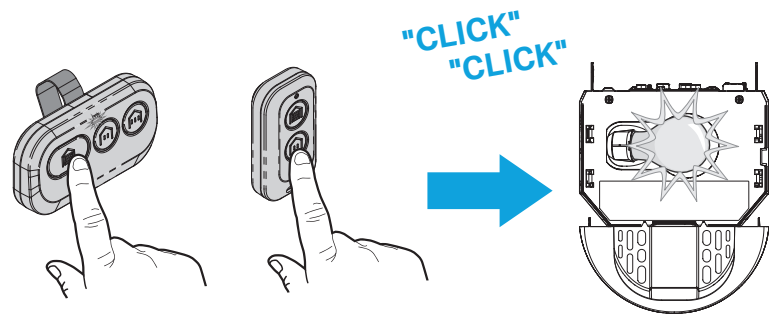


Select **MENU**, then select **PROGRAM** and follow on screen instructions.



30 Seconds

02 **Within 30 seconds**, press and hold the remote button that you would like to program. Release the button when the garage door opener lights flash and/or two clicks are heard.



To test your remote has programmed successfully [tap here](#).

Test your Remote has Programmed Successfully

TEST FOR SUCCESS: Press the remote button that you programmed. The garage door opener will activate. If the garage door opener does not activate, wait for the garage door opener's LEARN button LED to turn off (for a yellow or white LEARN button this could take up to 3 minutes). Then repeat the programming steps, go to ["Programming the Remote"](#).

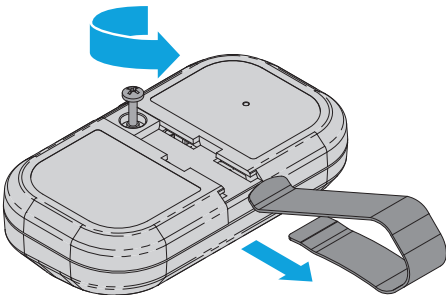
TROUBLESHOOTING: If you are trying to program your remote to a garage door opener with a white LEARN button and previously programmed the same remote to a garage door opener with a different color LEARN button, use the programming instructions on [page 5](#). Please note: if you use these instructions, the garage door will not move - when the garage door opener lights flash and/or clicks once, the remote has programmed successfully.

Replacing the Battery: 3-Button Remote Control

The LED on your remote control will stop flashing when the battery is low and needs to be replaced. Replace the battery with only 3V CR2032 coin cell battery. Dispose of the old battery properly.

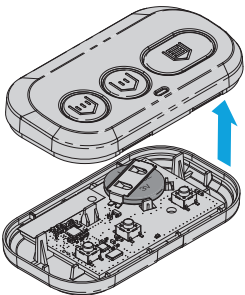
To replace the battery, follow the instructions as shown below. Reference the illustration below for each step.

01 On the back side of the remote, using a **Phillips #1** screwdriver, unscrew the captive screw until it rotates freely.

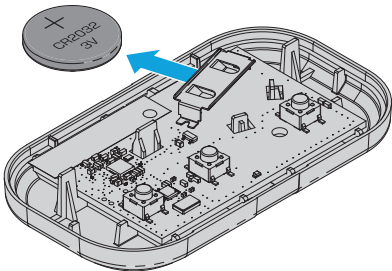


02 With the remote button side up, pry open the remote top housing from the bottom housing (if the housing will not separate, check that the captive screw is rotating freely).

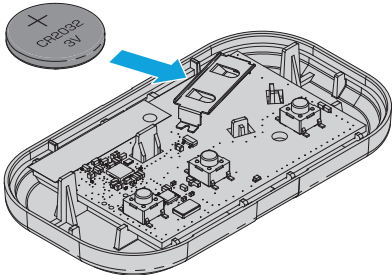
NOTE: The logic board could detach from the remote button. If this occurs, carefully replace using the guiding holes in the board.



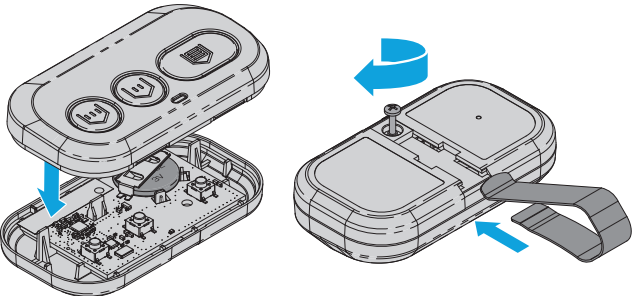
03 With a cotton swab, push the old battery out of its holder in the direction of the nearest edge.



04 Insert the replacement battery positive side up.



05 Align the remote top and bottom housing so they clip together. Tighten the captive screw until the top and bottom housing no longer shift (**do not overtighten the screw to avoid cracking the plastic housing**).

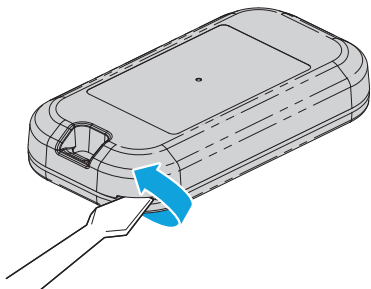


Replacing the Battery: 2-Button Keychain Remote Control

The LED on your remote control will stop flashing when the battery is low and needs to be replaced. Replace the battery with only 3V CR2032 coin cell battery. Dispose of the old battery properly.

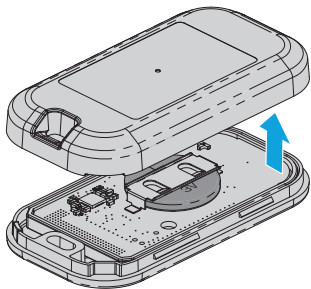
To replace the battery, follow the instructions as shown below. Reference the illustration below for each step.

01 With the remote button side down, separate the top and bottom housings of the remote by placing a flat screwdriver blade into the gap in the corner of the remote and gently twisting.

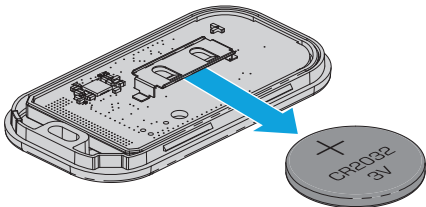


02 Pry the top housing from the bottom housing.

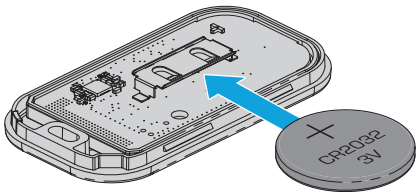
NOTE: The logic board could detach from the remote button. If this occurs, carefully replace using the guiding holes in the board.



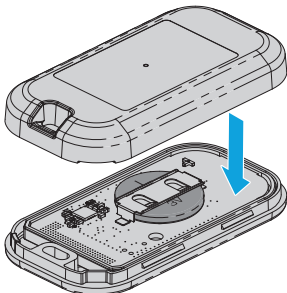
03 Following the "REMOVE" arrows direction printed on the logic board, with a cotton swab, push the old battery out of its holder.



04 Following the "INSERT" arrow direction printed on the logic board, insert the replacement battery positive side up.




05 Align the remote top and bottom housing and press so they clip back together.



Replacing the Battery (continued)

⚠️ WARNING

- **INGESTION HAZARD:** This product contains a button cell or coin battery.
- **DEATH** or serious injury can occur if ingested.
- A swallowed button cell or coin battery can cause **Internal Chemical Burns** in as little as **2 hours**.
- **KEEP** new and used batteries OUT OF REACH of CHILDREN.
- **Seek immediate medical attention** if a battery is suspected to be swallowed or inserted inside any part of the body.



⚠️ WARNING

- Remove and immediately recycle or dispose of used batteries according to local regulations and keep away from children. Do NOT dispose of batteries in household trash or incinerate.
- Even used batteries may cause severe injury or death.
- Call a local poison control center for treatment information.
- Battery Type: CR2032
- Battery Voltage: 3 V
- Non-rechargeable batteries are not to be recharged.
- Do not force discharge, recharge, disassemble, heat above (manufacturer’s specified temperature rating) or incinerate. Doing so may result in injury due to venting, leakage or explosion resulting in chemical burns.

- Ensure the batteries are installed correctly according to polarity (+ and -).
- Do not mix old and new batteries, different brands or types of batteries, such as alkaline, carbon-zinc, or rechargeable batteries.
- Remove and immediately recycle or dispose of batteries from equipment not used for an extended period of time according to local regulations.
- Always completely secure the battery compartment. If the battery compartment does not close securely, stop using the product, remove the batteries, and keep them away from children.

Replacement Parts

Description	Part Number
Visor Clip	041-0494-000

Additional Resources

One Year Limited Warranty

The Chamberlain Group LLC ("Seller") warrants to the first consumer purchaser of this product that it is free from defect in materials and/or workmanship for a period of 1 year from the date of purchase.

For more information, visit www.myq.com/warranty

Contact Us

For additional information or assistance, please visit: support.chamberlaingroup.com

NOTICE: This device complies with part 15 of the FCC rules and Innovation, Science and Economic Development Canada license-exempt RSSs. Operation is subject to the following two conditions: (1) This device may not cause harmful interference, and (2) this device must accept any interference received, including interference that may cause undesired operation. Any changes or modification not expressly approved by the party responsible for compliance could void the user's authority to operate the equipment.

HOW TO ORDER REPAIR PARTS

DEVANCO  **CANADA**

19192 HAY ROAD, UNIT Q
SUMMERSTOWN, ON, K0C 2E0

TOLL FREE **1-855-931-3334**
WWW.DEVANCOCANADA.COM

**WHEN ORDERING REPAIR PARTS
PLEASE SUPPLY THE FOLLOWING INFORMATION:**

- ✓ **PART NUMBER**
- ✓ **DESCRIPTION**
- ✓ **MODEL NUMBER**